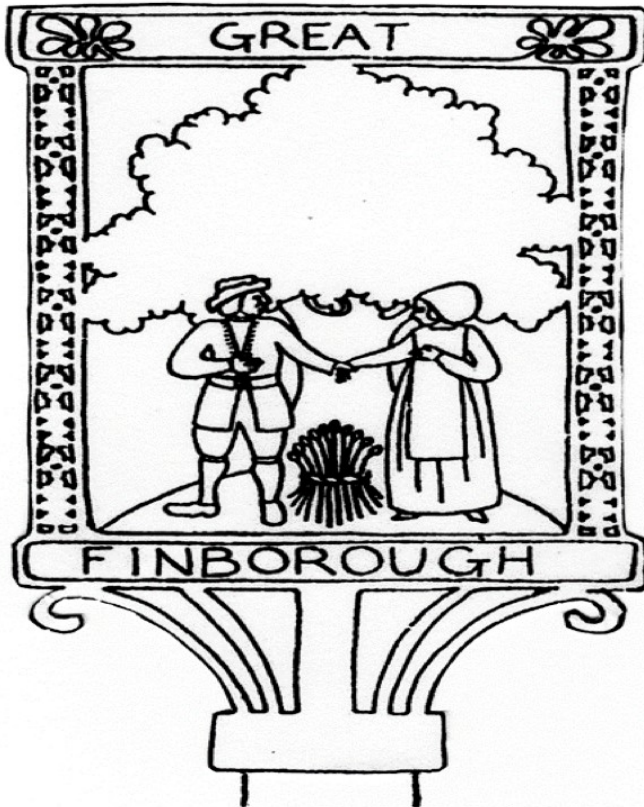


# **GREAT FINBOROUGH NEWSLETTER**



**February 2020  
ISSUE 505**

## **VILLAGE DIARY – February**

1	8pm	Live Music, Chestnut Horse
11	10-11.45am	Coffee Morning, St Andrew's church
13	7.30pm	Garden Club, Pettiward Hall
14	7pm	Valentines Dinner, Chestnut Horse
20	8pm	Quiz Night, Chestnut Horse
26	7pm	Film Night, Pettiward Hall
28	8pm	Live Music, Chestnut Horse
29	8pm	Comedy Club, Chestnut Horse

## **VILLAGE DIARY – March**

9	7.30pm	Parish Council, Pettiward Hall
10	10-11.45am	Coffee Morning, St Andrews Church
12	7.30pm	Garden Club, Pettiward Hall
22	12pm	Mothering Sunday Lunch, Chestnut Horse
25	7pm	Film Night, Pettiward Hall

**Yoga Class, Pettiward Hall, Every Monday, 8pm and Thursday, 9.30am**

## **PARISH COUNCIL MEETINGS 2020**

9 Mar, 6 Apr.

7.30pm in Pettiward Hall

The Newsletter is produced by Great Finborough Parish Council, printed by Gipping Press, and distributed to all households in the village free of charge. Claims made have not been verified. For these the newsletter disclaims responsibility.

## **Editorial**

When you are reading this, the month of January will have almost finished and a twelfth of 2020 nearly passed so it seems a bit strange to say Happy New Year but I will anyway and I hope you all had a happy and relaxing festive break.

December seemed to be very busy in the village with a myriad of Christmas parties, carol singing and Church services and it was good to see the pub being well supported. January seems to show no signs of quietening down and the quiz night was the most attended to date. The Johnny Cash tribute band went down very well and the Burns Night supper was a sell-out, not bad for a dry January! Make sure you get your bookings in early for the Valentines Dinner and the Mothering Sunday lunch the following month.

The regular events such as coffee mornings and film nights are still happening so make sure you check the "Village Diary" for times and dates. The very social Garden Club starts its monthly meetings again this month so why not pop along and see what is happening, have a cuppa and maybe increase your gardening knowledge, no prior experience necessary!

We have some new residents in the village this year so it's a warm welcome to Alison and Gordon who have moved into the Yews from near Saffron Waldon and also to Veronica Mills who has moved into 1 Stable Cottages, we hope you find the village life fun and make lots of new friends.

I have already mentioned the V word, gentlemen, forget the 14<sup>th</sup> at your peril!! Also, don't miss Denzil the Donkey's new blog on page 24.

The 15 February is the deadline for inclusion in the March issue of the Newsletter, so please contact Simon Tarabella or Peter Turner, or drop in to Maple Lodge, the kettle is always on.

**Simon Tarabella**

## Great Finborough Parish Council

The January meeting of the Parish Council was held on the 13 of the month at 7.30pm. The following matters were discussed and noted;

Public Participation – A member of the public from Combs Lane attended the meeting and enquired about the request for a speed limit reduction along Combs Lane. Details of the decision letter were read out and the final decision by County Councillors for Highways noted. It read "On the basis of the comments / observations from the Suffolk Constabulary and the existing traffic speeds, it is concluded that the proposal for a speed limit reduction be rejected". It was agreed that a full copy of the letter be forwarded to the member of the public. The amount of water on Combs Lane was also mentioned and Councillor Matthissen agreed to arrange an on-site meeting of all interested parties to discuss solutions.

Planning – There were no planning applications or decisions made to discuss.

The budget working group presented its report and the budget for 2020/21 was approved. Following on from that the precept was set at £13,048 which gives an annual increase of £1.34 per band D household.

It was agreed to go ahead with the tree work around the play area and also to approve publication of the village footpath map. Quotes will be sought for the production and installation of white entrance gates to the village which hopefully will help to keep speeds through the village down. A contractor is still being sought to refurbish the village notice board.

The next meeting of the Parish Council is on Monday 9 **March**, 7.30pm, upstairs room, Pettiward Hall

**Paula Gladwell**



# Traditional Oak Carpentry

Conservation and Construction



- Carpentry Repairs
- New Oak Homes and Extensions
- Garden Structures
- Condition Reports
- 3D Design Service

[www.traditionaloakcarpentry.co.uk](http://www.traditionaloakcarpentry.co.uk)
01449 768817

## TENNIS FOR ALL

I play tennis at Stowmarket Tennis Club and so do several others from Great Finborough. A number of you used to play tennis as kids or in younger days, and others have thought about giving it a go but haven't got around to it. Some of you have mentioned an interest in having a hit, so I've arranged for a Great Finborough residents' tennis 'taster' session for 2020. It can be daunting to turn up at a club when you don't know anyone, or aren't very fit, so this is an easy way to try it out with no ongoing commitment required.

Tennis is a game for all, from 4 to 94 years old, and whatever your ability level. You can have had a break for decades and come back to the game. Stowmarket is a small friendly club with all year round play as the courts are covered in the winter months. We don't have to wait until summer for our taster session. The date will be fixed around those who express an interest.

Suitable for single adults, children, couples and families. A professional coach will be on hand. You only need trainers. If you don't have a racquet we can lend you one. Contact me on 07717 582150 if you want to know more.

**Sally Gooch**

## **News from your District Councillor - John Matthissen**

Climate Emergency – What can we do?

In December I reported that the District Council had declared a Climate Emergency and a Biodiversity Emergency. Over the coming year I hope to include a monthly suggestion of action we and our families can consider to help reduce climate-changing emissions, and adapt to what change is already inevitable, given the fossil fuel discharges of the last couple of centuries.

Veganism has had a lot of media attention recently, but less dramatic changes of diet are an easier place to start. Meat-free Mondays have been promoted for some time, and do make sense. A good start could be by including some textured vegetable protein (TVP) to the minced beef when making a shepherd's pie. There are other meat substitutes such as tofu which can be used in recipes, and making beans the main protein of a meal is easy, given the wide range now available; not just baked beans!

Food waste is a major problem when it enters the waste stream via our black bins, and saving left-overs as portions in the freezer, or blended into soup, will reduce emissions another way.

When buying meat, look for good quality, locally produced, which will reduce food miles and probably retain fields as pasture, a key store of CO<sub>2</sub>. More next month.

Council Tax - The Mid Suffolk part of the bill will only go up about 5p a week, but the County Council and Police will need bigger increases. If you are struggling to pay, and get into arrears, please contact the council for help in planning your repayments. We have adopted a Citizens Advice protocol aimed at helping rather than penalising.

Needham Lake - A new visitor centre and café has now been approved, and work should begin in the spring. Already a very popular attraction, the lake will be well worth a visit later in the year.

**To get in touch.....**

Call 01449 258894

Or email – [councillor@matthissen.net](mailto:councillor@matthissen.net)

Or write to me at 2 Brick Kiln Cottages, Barretts Lane, Needham Market IP6 8RZ



# CHESTNUT HORSE



TRADITIONAL WELCOME

**Sharon & Robert assure you of a very warm welcome  
with a great choice of Real Ales, Lagers, Wines,  
Spirits & Soft Drinks**

***Opening Hours:***

Tues to Sat - 12 Noon to 11pm

Sun - 12 Noon to 9pm

Mon - Closed

***Food Served***

Tues to Fri - 12 Noon to 2.30pm, 5pm to 9pm

Sat - 12 Noon to 9pm, Sun - 12 Noon to 6pm

Light Bites, Full Menu, Daily Specials

All food Homemade - Children eat free on a Tuesday  
with Paying Adult.

***Events: February***

*1st - Live Music - Brothers Grimm 8pm*

***14th - Valentine's Menu - Pre booking Only***

*15th - Mr & Mrs Competition - Guest Host Presenter  
register yourselves now!*

*28th - Live music - Elvis Tribute 8pm*

*29th - Comedy Night - headline act - Trish Dunn*

***Forthcoming events***

*March 22nd - Mothers Day Lunch - Book early!!*

***Regular events***

*Every Tuesday from 7.30pm -*

*RedTooth Poker Evening, tuition given*

*3rd Thursday every month from 8pm -*

*Quiz Night, book a table now!*





Developing & Delivering your Architectural Dreams

Residential | Commercial | New Build | Listed | Free Initial Consultation

T: +44 (0) 1449 708510 E: [tim@timmoll.com](mailto:tim@timmoll.com) [www.timmoll.com](http://www.timmoll.com)



DESIGN | PRINT | PROMOTION

## Planning an event in 2019?

Give us a call and we would be more than happy to advise and help on postage, signage, flyers, banners and programmes.

Tel: 01449 721599 Email: [enquiries@gippingpress.co.uk](mailto:enquiries@gippingpress.co.uk)  
**[www.gippingpress.co.uk](http://www.gippingpress.co.uk)**

Units 1&2 Lion Barn Industrial Estate,  
Needham Market, Ipswich, Suffolk IP6 8NZ

## **The Pettiward Hall**

### **“Little Ernie”**

The winners in the December lottery were Hazel Terry and Keith Yeates and in January, Marion Mason and Mary Smyth. They each received £8.75.

### **New Class**

Do you fancy trying something a bit different in 2020? A new dance/fitness class has started on a Thursday evening from 6-7pm. The dance style is Burlesque and the class is suitable for ladies over the age of 18. Please contact Hayley Brett at [vivalamourschoolofburlesque@gmail.com](mailto:vivalamourschoolofburlesque@gmail.com) for further details.

### **Parking**

The committee have asked me to remind residents that they should not park outside the hall when attending meetings, classes etc. or dropping off/collecting children. Valley Lane is very narrow and there have been several incidents recently of lorries and farm vehicles colliding with parked cars. There is one space between the No Parking/Fire Exit signs that is suitable for parking temporarily to load or unload equipment or to drop off someone with mobility issues. Cars should be parked either in the village car park or in the main road opposite the pub (but not on the pavement). The Parish Council are happy for cars to be parked in this section of High Road as it can have the effect of slowing traffic! Thank you for your co-operation.

**Mary Preece**

### **Buxhall Fun Quiz**

Saturday 21 March is a date to book for the next Buxhall Fun Quiz, 7.30pm in the Village Hall, £3.00/person, teams up to 6 players. Please bring our own drinks, glasses and nibbles. To avoid disappointment, do book in early by ringing Mim/Keith on 736598. Offers of draw prizes will be greatly appreciated.

**Kieth Proctor**

## Castell Carpentry

Doors Supplied & Fitted  
Shelves & Storage  
Cupboards & Cabinets  
Fitted Furniture

**Call Tom**  
**0757 900 8271**

[tom@castellcarpentry.co.uk](mailto:tom@castellcarpentry.co.uk)

## TIME FOR YOU™

DOMESTIC CLEANING

Typically £12.50 per hour

We clean so you don't have to!



Call us on  
**01359 258991**



[www.timeforyou.co.uk](http://www.timeforyou.co.uk)

[Suffolk@timeforyou.co.uk](mailto:Suffolk@timeforyou.co.uk)

Regular - Weekly - Insured - Cleaners



## Hatha yoga

Postures, breathing, meditation and relaxation  
practices to improve wellbeing

The Pettiward Hall, Great Finborough,  
Mondays 8 to 9.15pm & Thursdays 9.30 to 10.45am

Chamberlin Hall, Bildeston, Thursdays 6 to 7.15pm

All welcome, including those new to yoga  
First session free ♦ Drop-in and block booking options  
One-to-one and private small group sessions also available

*For more information, or to book your place*

Tel. 01449 771338 Mob. 07790 842432

Email: [catherinerolfeyoga@gmail.com](mailto:catherinerolfeyoga@gmail.com)





I would like to extend my sincere thanks to the wonderful people of Great Finborough for the fantastic support with fundraising for my Grandson George's memorial bench, we exceeded our target, so were able to make donations to EACH (East Anglia's Children's Hospices ) and the Church. The bench was blessed by Rev Chris on Sunday 24 November when Penny Waggott presented the donation to St Andrews Church. Sincere thanks, **Marion Mason and Penny Waggott**



### **The Handbell Ringers**

Thank you to this wonderful group who come around our homes with their bells before Christmas providing still moments amidst the rush. Their collection goes to the Air Ambulance. You may book in advance if you wish. Our 2 and

4-year-olds sat entranced and anyone who can achieve that earns boundless admiration!

**Sara Raynes**

## **Great Finborough & District Garden Club**

The past Garden Club year has been very busy, as the members were encouraged to plant, grow and harvest by presentations from a wide-ranging group of speakers.

The social side of the club started with an amazing garden party at Broad Oak which in spite of the downpour was a great success, this was followed by the Club members BBQ at "The Little House". These two events enabled us to make donations to both St Andrew's church and the Pettiward Hall. Our final social event of 2019 took place in the Pettiward Hall on 5 December. The Christmas quiz over nibbles and mulled wine was another resounding success with many club members enjoying an evening of quizzes, good food, good company and club carol singing.

The horticultural aspect of the club was maintained by a variety of talks and visits which included Wood Farm at Gipping, and Hyde Hall; there was also a most enjoyable flower arranging workshop with Vicki Hease. In collaboration with the Allotment Association we also held a very successful Produce Show

The Club opens 2020 with the meeting on 13 February, to be held as usual in the upper room of the Pettiward Hall at 7:30pm. Our speaker is to be Mark Richardson from Stewart Landscape construction. He will be talking about the world of commercial landscaping and the hard construction for shows such as Chelsea and Hampton Court. The proposed club visit to Beth Chatto's for the snowdrops will not now take place.

Finally, if you are interested in joining the garden club or would like to join us for any event you will be very welcome. Membership is only £15.00 per household per year or £2.50 per session for visitors. For further information contact either: Judith Cameron on 672978 or [judyandian@btinternet.com](mailto:judyandian@btinternet.com).

**Judith Cameron**



**Too busy?**



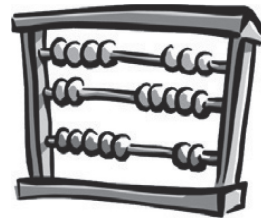
**Let Ovensclean take care of it!**

**OVENCLEAN**  
The original oven cleaning specialists

Tel: 01359 259818  
or visit [www.ovenclean.com](http://www.ovenclean.com)  
to find your local specialist

# TWINN ACCOUNTANTS LTD

We offer an **efficient and professional accountancy** service at a very competitive rate.



- ✓ Annual accounts and tax returns for Sole Traders, Partnerships and Limited Companies
- ✓ Preparation and assistance with VAT returns
- ✓ Payroll Services
- ✓ Construction Industry returns
- ✓ Management Accounts
- ✓ Tax Planning
- ✓ Company Secretarial Services

Tel: **01284 787616**

Fax: **01284 787183**

Email: **[info@twinnaccountants.co.uk](mailto:info@twinnaccountants.co.uk)**

**[www.twinnaccountants.com](http://www.twinnaccountants.com)**

**All accountants are not the same...we promise!**

## February 2020 From the Rectory



**The Baptism of Christ**, which we celebrated on 12 January is one of those slightly odd moments in the life of Jesus. Why on earth would he want or need to be Baptised? Matthews Gospel (3.13-17) shows a certain embarrassment about it. Listening to our Bishops' Vlog the week before reminded me of Jesus' great humility in accepting Baptism from John (the Baptist) who might have been seen

by many as a rival. It reminds us of our need for humility within our families and communities. Whoever we are, wherever we live, whatever our qualifications or intellect we are all need to allow others into our lives and listen to their views. There are many closed minds and in public discourse many 'shouty' people. I wonder if arrogance is the greatest sin of our generation?

**Traditionally Lent** – which begins on Ash Wednesday the 26 February is a time of reflection and self-examination. Most churches run groups to augment the usual Bible studies and many more people join in to try to strengthen and deepen their faith as well as examine what it means in this generation. This year we have decided to join Embrace\* on a journey. A journey that travels with Jesus from the start of his mission to the cross, looking at the people he met on the way. A journey that visits the Middle East today, hearing stories from those who live there and the challenges they face. A journey that helps us look within our lives and outwards at people we encounter. Our course contains six sessions with Bible studies, prayer ideas and practical actions under the themes of:

Celebrating family

Healing

Breaking down social barriers

Speaking out against injustice

Mental health

Forgiveness

Each is stand alone and please come when you can. We are able to run two sessions each week as below.

Wednesday 4<sup>th</sup>, Monday 9<sup>th</sup>, Wed 18<sup>th</sup>, Thurs 26<sup>th</sup> March and Wed 1<sup>st</sup> and Wed 8<sup>th</sup> April at Combs Rectory 135 Poplar Hill Stowmarket 7.30pm and/or Thurs 5<sup>th</sup>, 12<sup>th</sup>, 19<sup>th</sup> and 26<sup>th</sup> March and 2<sup>nd</sup> and 9<sup>th</sup> April at Onehouse Rectory Woodland Close Forest Road.

Several of our Churches will be running **Soup Lunches** in aid of Third World Charities so you can make a financial contribution as part of your Lenten 'Discipline'!

THANK YOU all for the incredible amount of work undertaken in the churches to make Christmas such a success. Overall, we had record numbers attending services and certainly the Carol Singing and Handbell ringing was well received everywhere. Substantial donations to charity were made. Record numbers turned up at The Shepherd and Dog and we were able to offer four-part harmonies for the carols!

And finally – but importantly -at our **Men's Breakfast** on the 11 January we were pleased to hear from Gary Crockett of Suffolk's ***Warm Homes Healthy People project***. We were pleased to hear of the many initiatives and the unspent money he has available in various funds to assist people in difficulty. The criteria is surprisingly wide. He explained the number of unfortunate people who are *seen* as Bed Blockers – at great cost to the NHS – because they could not return to warm enough homes. There was much more and both Derek Ames and I have more information and contact details if you know of anyone the scheme might assist.

**Rev Chris**

## **News from Onehouse**

There will be a St George's Day meal on the 24 April, proceeds to St John's Church, Onehouse. Not all the arrangements have been decided as yet but look out for more information in next month's magazine.

**Carole Hearn**

## **PARISH REGISTERS for Gt Finborough**

### **Baptism**

1 December 2019

Jasmine Hayley **Haden** & Olivia Sophie **Haden**

Parents Dean & Carly Haden



### **Funerals and Cremation**

Josephine Pamela **Gibbons**

Died 4 October 2019, aged 80

Funeral St Andrews Church 4 Dec 2019, cremation at Seven Hills

Paul Joe **Presland**

Died 2 December 2019, aged 69

Funeral 16 December 2019, Cremation at Seven Hills

Lynette April **Snell**

Died 4 December 2019, aged 41

Funeral 13 December 2019, interment St Andrews Church

### **Burial of Ashes**

Reginald John **Green**

15 December 2019

### **Christmas Fundraising**

Thank you to everyone who kindly donated money at the carol singing before Christmas in the Chestnut Horse, to Hilde on the keyboard, and to Sharon who is making our local a great place to meet up, have a drink and a good pub meal. Cancer Research and the Cystic Fibrosis Trust have benefited to the tune of £130 from our carolling. Thanks especially to Peter and Doris in Church Road for the £16 raised for the CF Trust from the sale of their mistletoe.

**Norman Vendittelli**

### Non-members wild birdseed orders.

The next order will be placed on the **12 February**. Bird seed will be ready for collection from Abbey Farm Cottage after **10.00am and before 6.00pm on Wednesday 19 February**. If you would like to place an order please let me have your requirements together with a cheque made payable to "Great Finborough Garden Club", or **by BAC's** "Gt Finborough Garden Club", sort 09-01-54, account no 20213287 please reference your name followed by B/S. Orders may be posted to or dropped off at The Little House, High Road, Gt Finborough, IP14 3AA, or if it's more convenient dropped off at 1 Valley Lane, Gt Finborough.

### Name

### Tel No

Product	Weight	Price	Quantity Cost
Wild Bird Mix	20 kg	£10-50	
W.B.M. Premium	20kg	£12.00	
W.B.M No Wheat	20kg	£14-50	
W.B.M NEW High Energy	12.75 kg	£12-50	
W.B.M. No Mess	12.75 kg	£13.00	
W.B.M Robin & Songbird	12.75 kg	£13-00	
Finch Mix	20 kg	£12.00	
Mixed Corn	20 kg	£8-50	
SUPER Poultry Mix	20kg	£9-50	
Peanuts (superior)	25 kg	£33-00	
Peanuts (half sack)	12.5kg approx	£17-50	
Black Sunflower Seed	12.55 kg	£10-50	
Sunflower Kernels	20 kg	£22-00	
Sunflower Kernels	10kg approx.	£12-00	
Nyjer Seed	25kg	£27-00	
Nyjer Seed	12.5kg approx	£14.50	
Suet Pellets	12.75kgs	£17-00	
FatBalls(any quantity)	Price each	10p	
Suet Balls (Superior)	Price each	13p	
		Total	

Orders not collected on the day will require customer to make special arrangements to collect. The next seed order will be April 2020. Thank you, **Peter Turner** 07789727974, p.turner125@btinternet.com

# KH

Kevin Hollings  
KITCHEN STUDIO



Unit 14 Lodge Works, Stowmarket Road,  
Old Newton, IP14 4EE

01449 257160 [www.kevinhollings.com](http://www.kevinhollings.com)  
[info@kevinhollingskitchens.co.uk](mailto:info@kevinhollingskitchens.co.uk)

## Providing Personal Care in your own Home



## Do you need help with:

Personal Care  
Dementia Care  
Respite Care  
Help Around the  
House  
Day Trips Special  
Occasions

Request a  
Brochure or book  
an appointment  
on 01449 763086  
or 01284 711845



*We only employ people who love to care.*

 **MyCare**  
at Home  
Supporting Independent Living

[www.mycare-at-home.co.uk](http://www.mycare-at-home.co.uk)

# Tank Change Limited

Does your Oil Tank need replacing?  
We are your local oil tank installer established  
since 1989 with over 16,000 installations to date

- New oil tank installations, relocations and servicing
- Emergency pump out service available for leaking oil tanks
- Kingspan Titan polyethylene tanks and steel tanks held in stock
- OFTEC registered
- Kingspan Titan Accredited
- Fully insured
- Parish magazine discount
- Free surveys

Tel. 01449 781210

Email: [enquiries@tankchange.co.uk](mailto:enquiries@tankchange.co.uk)

[www.tankchange.co.uk](http://www.tankchange.co.uk)



Registered  
Business



## Finborough Court

Pilgrim's Way, Great Finborough  
Stowmarket IP14 3AY



Our Christian background is at the heart of both our values and our actions. At Finborough Court we strive to create a community where Christian worship, prayer and support are a core part of daily life.

Finborough Court is a modern and spacious home with 32 en-suite care rooms, 16 one-bedroom flats and 12 two-bedroom bungalows to rent.

If you, or someone you know are looking for your next home we would be happy to chat with you either over the phone or in person.

For further details or to pay us a visit please email or phone:

### Care Enquiries:

Tel: 0300 303 1450 (option 1)  
[finborough@pilgrimsfriend.org.uk](mailto:finborough@pilgrimsfriend.org.uk)

### Retirement living:

Tel: 0300 303 1450 (option 6)  
[sylvia.humm@pilgrimsfriend.org.uk](mailto:sylvia.humm@pilgrimsfriend.org.uk)

### Job Vacancies:

We are always looking for dedicated individuals to join our friendly team in day/night care, kitchen and housekeeping.

### Please visit our website:

[www.pilgrimsfriend.org.uk/finborough-court](http://www.pilgrimsfriend.org.uk/finborough-court)



### Find us on Facebook:

[facebook.com/finboroughcourt](https://facebook.com/finboroughcourt)







**St Andrew's  
Church  
Great  
Finborough**

*Come and join us for Craft activities, Games,  
Children's Worship, Bible Stories, Fun and More*

**Friday 3<sup>rd</sup> January**

**Friday 7<sup>th</sup> February**

**Friday 6<sup>th</sup> March**

**3.30pm in Church**

All children with accompanying adult welcome.  
Please stay for tea after our Messy  
service and activities

For more information please contact  
Revd Canon Pauline Higham:  
paulinehigham@googlemail.com

Messy Church logo © The Bible Reading Fellowship 2019



COMBS AND FINBOROUGH GROUP  THE CHURCH OF ENGLAND

## **Healing and Wholeness Service**



**Sunday 2<sup>nd</sup> February 2020**

**3.00pm at St Andrews's Church  
Great Finborough**

Communion Service with the opportunity  
for individual prayer for healing and  
wholeness

## 2019 Number Quiz

A very big thank you to Ivy Friston, Anne Hicks, Denise King and Lesley Steed whose sterling work helped to raise a total of £232 from the sale of Quiz Sheets for St Mary's Church, Buxhall.

The overall winners from the 11 received were Mim and Keith Proctor, with Toni and Aidan Kendall winning a bottle of wine in the draw from all the remaining entries. Below are the answers that I came up with, there were some variations received, if they were correct, they were allowed. Some of the answers were fascinating, one that didn't make it was (36), '6 people for passing the parcel'! What happens if there are 5 or 7 people?

**Judith Hickman**

### 2019 NUMBER QUIZ – ANSWERS

1	B 1 G 1 F	BUY 1 GET 1 FREE
2	5 N is G F N	NOVEMBER IS GUY FAWKES NIGHT
3	21 S on a D	SPOTS ON A DI or DICE
4	5 S in a C	STOMACHS IN A COW or SHILLINGS IN A CROWN or SCORES IN A CENTURY
5	22 M from C to D	MILES FROM CALAIS TO DOVER
6	25 J is B N	JANUARY IS BURNS' NIGHT
7	24 B B in a P	BLACKBIRDS BAKED IN A PIE
8	25 P is M P in P B D	POUNDS IS MINIMUM PRIZE IN PREMIUM BONDS DRAW
9	10 G B H on the W	GREEN BOTTLES HANGING ON THE WALL
10	2 T D	TURTLE DOVES
11	A P P a 1000 W	A PICTURE PAINTS A THOUSAND WORDS
12	21 G S	GUN SALUTE
13	25.4 M in an I	MILLIMETRES IN AN INCH
14	7 U	UP
15	1685 B of S	BATTLE OF SEDGEMOOR
16	747 J J	JUMBO JET
17	1 A is A F D	APRIL FOOLS DAY
18	A S in T S 9	A STITCH IN TIME
19	3 S for a S	STRIPES FOR A SEARGENT
20	40 R W A	RUBY WEDDING ANNIVERSARY
21	5 I in a Q	INSTRUMENTS IN A QUINTET
22	4 S by V	SEASONS BY VIVALDI
23	1 K E	KELLY'S EYE
24	24 S of P in a Q	SHEETS OF PAPER IN A QUIRE

25	10 P and 3 T in C	PROVINCES AND 3 TERRITORIES IN CANADA
26	21 O is T D	OCTOBER IS TRAFALGAR DAY
27	32 T in the H J	TEETH IN THE HUMAN JAW
28	7 A of M	AGES OF MAN
29	1857 I M	INDIAN MUTINY
30	A B in the H is W 2 in the B	A BIRD IN THE HAND IS WORTH 2 IN THE BUSH
31	2 O P in G is a D B	OVER PAR IN GOLF IS A DOUBLE BOGIE
32	3.14 the V of P	THE VALUE OF PI
33	14 L in a S	LINES IN A SONNET
34	2 E S on an I T	EQUAL SIDES ON AN ISOSCELES TRIANGLE
35	100 Y S B S	YEARS SLEEPING BEAUTY SLEPT
36	6 P for P the P	POINTS FOR POTTING THE PINK
37	6 H and 1 P on a C L	HOOPS AND 1 PEG ON A CROQUET LAWN
38	4711 E D C	EAU DE COLOGNE
39	100 Y W with F	YEARS WAR WITH FRANCE
40	4 T T	TWO TWOS or TIMES TABLE or TELETUBIES
41	40 C in a G of Q	CARDS IN A GAME OF QUADRILLE
42	13 B D	BAKER'S DOZEN
43	18 V A	VOTING AGE
44	3 C in a F	COINS IN A FOUNTAIN
45	12 D of C	DAYS OF CHRISTMAS
46	10 P in B	PINS IN BOWLING
47	40 D and N of the G F	DAYS AND NIGHTS OF THE GREAT FLOOD or THE GREAT FAST
48	1492 C C D the N W	CHRISTOPHER COLUMBUS DISCOVERED THE NEW WORLD
49	0 the M of G	THE MERIDIAN OF GREENWICH
50	54 C in a P (I J)	CARDS IN A PACK (INCLUDING JOKERS)

**In the Car Park every  
Thursday 1.45 to 3.15pm**



**SERVICES INCLUDE:**  
 CAR TAX  
 POSTAL SERVICES  
 POST OFFICE CARD ACCOUNT  
 MONEYGRAMS  
 E TOP-UPS  
 PRE ORDER TRAVEL MONEY  
 CASH DEPOSITS AND WITHDRAWAL VIA CHIP & PIN  
 ELECTRONIC BILL PAYMENTS  
**USE IT OR LOSE IT**

## Denzil's Diary

Hello everybody, my name is Denzil the Donkey and I have been badgered (not by an actual Badger but my paddock mate Tweazle) into putting down my musings on village life. I thought I would start by letting you know a bit about myself.

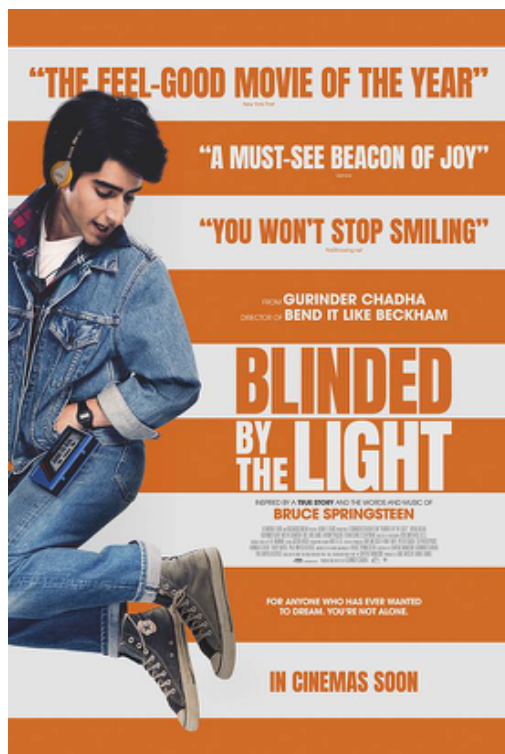
As the new year starts, I have decided to follow the current popular trend and step back from public engagements (nothing to do with not being invited to star in the crib service at Christmas, I'm not bitter, I know I can be a bit temperamental at times!) and concentrate on becoming financially independent and organise my own publicity and event bookings. To that end, I was tempted to purchase and set up my own web domain, Suffolk's Royal Donkey, but have been advised such action might make me open to legal action from certain people who seem to think they have sole rights to such things. We will just have to see how things pan out with that as I am in no rush to promote myself (unlike some I could mention), I have got Donkey's years to do that if you will excuse the pun!

Talking of Donkeys ears (see what I've done there?) I know mine are quite large but they do let me hear what's going on around the village as people often pass the time of day with me as they are out on their walks. Both Tweazle and myself really appreciate the time you spend with us and assure you that we aren't just looking for titbits when we wander over for a chat, honest.

I was hoping to participate in dry January but obviously Greta's global warnings haven't reached Suffolk yet and it has continued to be unseasonably wet and windy, not a sign of frost or snow. I am trying not to contribute too much extra methane to the atmosphere by pledging to eat more carrots and apples and leave the grass and plants alone. I would hesitate to suggest that the early morning dog walkers might also benefit from some dietary advice judging by some of the noxious gases they emit! Still, live and let live is my mantra.

Well, that's it for this month, back to the stable for a rest. Did I tell you the one about how I got the cross on my back..... **Denzil**

# FINBOROUGH COMMUNITY CINEMA



## **‘Blinded By The Light’** (12)

**Pettiward Hall**

**Wednesday 26th February 2020**

- Screening commences at 7.00pm
- Complimentary tea and biscuits in the interval
- Tickets: Adults £5 Children £3
- Tickets can be purchased on the door.

For more information please contact **Norman** on 07930 338580

## **A & C Fencing & Landscaping.**

**Fence erection - Landscaping - Patios and sleeper walls - Shed bases laid & sheds erected - Lawns & grass areas up to 4 acres cut - Hedge cutting - Driveways - General garden maintenance - Any small building projects.**

**Free no obligation quotes contact Andrew Wade.**

**07748785197 or 01449674093 or email**

**wade.andrew63@gmail.com**

## **ALL SEASONS LANDSCAPE GARDENING**

**Garden Landscaping • Turf Laying • Paths & Patios  
Garden Maintenance • Hedge Cutting • Fencing  
Specialise in Low Maintenance Gardens**

*Established since 1998    Fully Insured & Guaranteed*

**For FREE estimates and more information on our service call Simon on**

**01449 720221 / 07922 035204**

**email: [suffolksi68@gmail.com](mailto:suffolksi68@gmail.com)**

**[www.allseasonslandscapegardening.co.uk](http://www.allseasonslandscapegardening.co.uk)**

## BUXHALL WI



At our AGM meeting in November, Sally Tomlinson was elected as President for a second consecutive year and our committee remains strong with 13 members.

As usual we had a flurry of activities in the lead up to Christmas. At the beginning of December, members enjoyed their annual Christmas meal at the Best Western Claydon Hotel. A memorable evening was had by all and one table in particular celebrated their exceptional luck on the raffle!

Our final fund raising event of the year was a 2 hour 'Sale' at St Peter's Church Hall co-ordinated by Gill and friends. The home-made Christmas wreaths were especially popular. This event together with the profits from our recent raffles at our meetings raised £1,100. Gill, Lou and Mary then went on 'trolley dashes' to buy presents for the children and ladies who would be at the Lighthouse Women's Shelter over Christmas.

At our Christmas Party, Samuel Stamp-Dod of 'VIP Balloons' gave us a fascinating demonstration of his balloon art together with reassuring environmental details about the balloons and the helium gas he uses. There was great merriment and bursting of balloons when members attempted to create a sword from a blown-up balloon. Several members had entered our Christmas competitions with Beryl being presented with the cup for her Christmas tree decoration made with matchsticks and Glynis the salver for the best Christmas table decoration. After enjoying our Christmas themed refreshments, the Buxhall Hand Bell Ringers rang Christmas carols with members joining in singing. This was followed with a collection made in aid of The East Anglian Air Ambulance

### Forthcoming Meetings

19<sup>th</sup> February: Cruising and Crafting

18<sup>th</sup> March: Caught in the Act – an illustrated talk and film on Suffolk otters.

Time: 7:30pm, Venue: Buxhall Village Hall

New members are always welcome and for a £4 visitors fee you can pop along to see us in action before deciding to join us.

**Hilary: (737671)**

# TOMLINSON GROUND CARE

## Horticultural & Garden Machinery Suppliers

Sales • Service • Parts • Repairs



1 Brettenham Road  
Buxhall, Stowmarket, IP14 3DL  
[www.tomlinsongroundcare.co.uk](http://www.tomlinsongroundcare.co.uk)

**01449 736060**

### Opening Times

Mon– Fri 7.30 am to 5.00 pm

Saturday 7.30 am to 12.30 pm



**Visit our LARGE SHOWROOMS**

This advert is too small to be able to show you all we have to offer, please visit our website or come and have a cup of tea/coffee and discuss your requirements.

Main Al-Ko and John Deere Dealers,  
over 15 ride-on and 25 walk-behind mowers to Try before You Buy

## Arboricultural & Landscaping Solutions

- All Aspects of Tree Surgery
- Soft & Hard Landscapping
- Maintenance & Lawn Care
- Fencing
- Domestic & Commercial
- Fully Insured
- NPTC Qualified

For more information please visit:  
[www.greenscenetreesurgery.co.uk](http://www.greenscenetreesurgery.co.uk)



# GREEN SCENE

**PLEASE CONTACT US TODAY FOR FREE QUOTATIONS & ADVICE**

**Phone:** 01359 298141 **Mobile:** 07866 866 880

**Email:** [greenscene@hotmail.co.uk](mailto:greenscene@hotmail.co.uk)



**Are you looking for a high-quality decorator?  
Look no further!  
Service with a smile, for all your decorating needs!**

Honest, reliable service  
Clean and tidy

**Claire Marks**

**Tel: 07895 277357**

**Email:**  
**Claire.marks@housetohomedecorating.co.uk**

**Web: [www.housetohomedecorating.co.uk](http://www.housetohomedecorating.co.uk)**

*Fed up of running around  
after your car?*

Why not give us the inconvenience  
– it's part of our service

**WE COLLECT & DELIVER**

Servicing, Welding,  
MOTs arranged  
Air-conditioning recharged  
General Repairs –  
shocks, clutches, brakes etc  
All work guaranteed

**S & P Motocare**  
Est 1990

Contact: Shane  
Tel: 01449 771102 or 07802 545737

***Personal Service at  
Competitive Rates!***



**REWTS**  
TREES AND GARDENS



Tel: 0782 5253 720

Email: [info@rewtstreesandgardens.co.uk](mailto:info@rewtstreesandgardens.co.uk)  
[www.rewtstreesandgardens.co.uk](http://www.rewtstreesandgardens.co.uk)

Qualified tree surgeon & horticulturist  
offering

- ☐ **Tree surgery:** from light pruning to large tree take down, surveys and stump removal.
- ☐ **Garden landscaping:** fencing, patios, decking, ponds, water features, planting designs.
- ☐ **Garden maintenance.**
- ☐ **Firewood:** Split and seasoned ready to burn. Any size, any quantity.

## T.P. Services

### UPV-c Window & Door Repairs

**Sealed Units, Hinges,  
Locks, Handles, Letter Boxes**

**Over 30 years' experience,  
free quotations**

**Contact: Tom**

**Mob: 07957 098118**

Email: [tpservices65@gmail.com](mailto:tpservices65@gmail.com)

## GIDNEY PLUMBING & HEATING

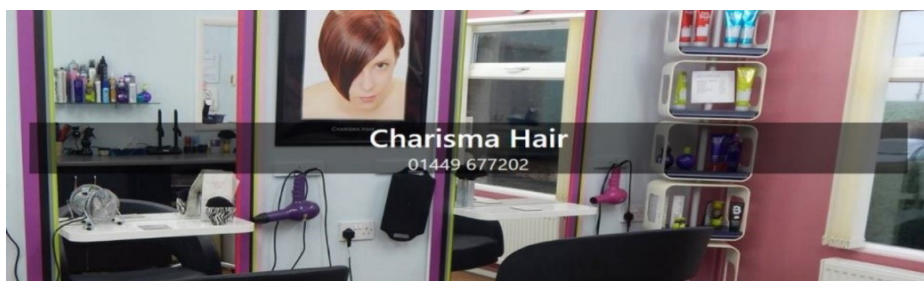
Tap Changes, Ball Valves, Shower Pumps,  
Water Softeners, Hot Water Cylinders,  
Bathroom, Wet room & Kitchen Installs,  
Radiator & Valve Replacements,  
Underfloor Heating, Heating System Repairs,  
Renovation & New Builds.

**24 Hour Emergency Cover  
Professional & Reliable Service**

**07534525263**

**01449 258254**

[gidneyph@outlook.com](mailto:gidneyph@outlook.com)  
[www.plumbinginsuffolk.com](http://www.plumbinginsuffolk.com)

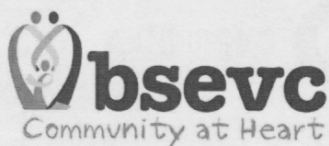


**Charisma Hair**  
01449 677202

**86a Forest Road, Onehouse**  
**charismahair.co.uk / 01449 677202**

- Full range of styling and colouring
- OPU manicures including gel polish
- Eyebrow tint and shape

(Closed on Mondays and Tuesdays)



BSEVC is a registered Charity No 1004198 – Co No 2636217

## **TRANSPORT SERVICES WITHIN YOUR COMMUNITY**

### **Accessible Vehicles**

We run services for anyone who cannot access public transport, to hospitals, shopping, social clubs, visiting relatives etc. Our fully accessible vehicles can be booked up to 2 weeks in advance and are available Monday to Saturday.

### **Fare Structure**

	<b>Adult</b>	<b>Under 5</b>	<b>Child 5-16</b>	<b>Under 18</b>
1 - 5 miles	£2.40	Free	£1.00	£1.00
6 - 9 miles	£3.30	Free	£1.00	£2.00
10 -14 miles	£4.20	Free	£1.00	£3.00
15 - 20 miles	£5.50	Free	£1.00	£4.00

### **Volunteer Car Service**

We have a team of volunteer drivers who use their own cars to transport people from "a" to "b". Fares for this community car service are 54p per mile (inc VAT) and there is a booking fee of £1.20 (inc VAT) for each single journey. Passengers can book as far ahead as they wish. Passengers are invoiced monthly.

**TO BOOK AND MORE INFORMATION; 01449 614271 or  
Email: [bookings@bsevc.co.uk](mailto:bookings@bsevc.co.uk)**

## FRIENDLY EXPERT FINANCIAL ADVICE

Need extra income from your investments?

Want to understand pension freedoms and what these might mean for you?

Or require a financial expert to talk to?

**Rob Marek FPFS**  
**Chartered Financial**  
**Planner**

**Call 01449 723526 or**  
**07462 250746**

To book a free initial consultation today



**Independent  
Financial  
Advice**

XL Independent financial advisers are authorised and regulated by the Financial Conduct Authority [FCA]. Our FCA number is 415232.

**enquiries@xlifa.co.uk**  
**[www.xlifa.co.uk](http://www.xlifa.co.uk)**

Norfolk House, Williamsport Way,  
Lion Barn Industrial Estate,  
Needham Market, IP6 8NZ



# MILES ROLFE JOINERY

Production, Design & Fitting of All  
Aspects of Joinery & Furniture

**Gt. Finborough • Suffolk**

07880 776845 mobile  
[mrjoinery@live.com](mailto:mrjoinery@live.com)

01449 771338 evening  
[milesrolfejoinery.co.uk](http://milesrolfejoinery.co.uk)

 Follow me on Facebook



## F. G. BROWN – OPTICIANS

Denmark House, 41 Bury  
Street, Stowmarket.

Tel: 01449 612812/674030

As independent opticians we offer a more personalised eye care service that you can trust for all the family

Professional Eye care – Quality Products – Personal Service

Opening hours:-Tuesday-Friday 9.00 am – 5.30 pm  
Saturday 9.00 am – 5.15 pm

*Your sight care is our priority*

PLUMBING – AIR CON – HEATING

**BENTLEY**  
-GROUP.co.uk

**Tel 07929 333356**  
[enquiries@bentley-group.co.uk](mailto:enquiries@bentley-group.co.uk)

## SPECIALISTS IN OIL BOILERS, SERVICE, REPAIR & REPLACEMENT

- Oil tank replacement
- Hot water cylinders serviced, repaired and replaced
- Heating service repair, replacement and upgrade
- Bathroom/showers installed and all other general plumbing work
- 95% breakdowns repaired within 1 hour on site – Fast response
- All work guaranteed for a minimum of 12 months – parts and labour

## CHURCH SERVICES FOR FEBRUARY 2020

### 2 February: Fourth Sunday before Lent

9.00 am	Holy Communion	Little Finborough
9.30 am	Sung Eucharist	Buxhall
9.30 am	<b>Holy Communion, Patronal Service</b>	Shelland
10.00 am	Messy Church	Combs Church
	Hall	
11.00 am	Holy Communion	Onehouse Trinity Hall
11.00 am	Morning Worship	Combs
3.00 pm	<b>HC, Healing &amp; Wholeness</b>	Great Finborough

### 9 February: Third Sunday before Lent

9.30 am	Holy Communion	Harleston
9.30 am	Matins	Buxhall
9.30 am	Matins	Shelland
11.00 am	Holy Communion	Combs
11.00 am	Family Communion	Great Finborough
11.00 am	Morning Worship	Onehouse Trinity Hall
3.00 pm	Evensong	Little Finborough

### 16 February: Second Sunday before Lent

9.00 am	Holy Communion	Little Finborough
9.30 am	Holy Communion	Shelland
9.30 am	Morning Worship	Harleston
11.00 am	Family Communion	Combs
11.00 am	Holy Communion	Great Finborough
6.30 pm	Evensong	Buxhall

### 23 February: The Sunday Next before Lent

9.30 am	Holy Communion	Buxhall
9.30 am	Holy Communion	Harleston
11.00 am	Holy Communion	Combs
11.00 am	Holy Communion	Onehouse Trinity Hall
11.00 am	Morning Worship	Great Finborough
3.00 pm	Evensong	Little Finborough

### 26 February: Ash Wednesday

9.30 am	Holy Communion	Onehouse Trinity Hall
---------	----------------	-----------------------

### **We meet for**

**Midday Prayer** 11.45 am on Tuesday at St. Mary's, Buxhall

**Holy Communion** 9.30 am on Wednesday at Trinity Hall, Onehouse

**Evening Prayer** 4.30 pm on Thursdays at St Andrew's, Great  
Finborough

**Morning Prayer** 10.00 am on Saturdays at St. Mary's, Combs, Lady  
Chapel

### ***All welcome!***

*Whether you are a regular worshipper or a visitor to our churches this  
Sunday, you will find a warm welcome at any of our services.*

### **Great Finborough Mobile Library Service 2019 at Oak Close on Fridays as follows:**

Feb 14, Mar 13, May 08, June 05, July 03 & 31

### **Buxhall & District Community Council**

Thank you to everyone who attended our last event of 2019. There was a fantastic atmosphere at the Bangers Beans and Bingo evening and the hall was full to capacity. We hope to host 2 more such evenings in 2020.

We are currently in the middle of planning our 2020 programme. After consulting with Great Finborough groups we are delighted to announce, that after a 2 year break, Buxhall will be hosting a Produce Show in 2020. So, you may like to bear this in mind when deciding what to plant in your garden or allotment this year.

**SAVE THE DATE**  
**Buxhall and District**  
**Produce Show**  
**12<sup>th</sup> September 2020**

### **WHO'S WHO IN GREAT FINBOROUGH**

Chair, Parish Council	Simon Tarabella	672072
	<a href="mailto:simon.tarabella@great-finborough.suffolk.gov.uk">simon.tarabella@great-finborough.suffolk.gov.uk</a>	
Clerk, Parish Council	Paula Gladwell	01284 828112
	<a href="mailto:finboroughparishclerk@gmail.com">finboroughparishclerk@gmail.com</a>	
District Councillor	John Matthissen	258894
	<a href="mailto:councillor@matthissen.net">councillor@matthissen.net</a>	
County Councillor	Penny Otton	737870
	<a href="mailto:penny.otton@councillors.suffolkcc.gov.uk">penny.otton@councillors.suffolkcc.gov.uk</a>	
Newsletter Editor	Simon Tarabella	672072
	<a href="mailto:simon.tarabella@great-finborough.suffolk.gov.uk">simon.tarabella@great-finborough.suffolk.gov.uk</a>	
Vicar	Rev. Chris Childs	673280
	<i>Combs Rectory, 135 Poplar Hill, IP14 2AY</i>	<a href="mailto:revcchilds@aol.com">revcchilds@aol.com</a>
Associate Priest	Rev Canon Pauline Higham	771791
	<i>The Rectory, Onehouse, IP14 2AY</i>	
Church Warden	Tim Hines	775525
Church Warden	Nigel Brown	675344
Pettward Hall Management Committee	Mary Preece	771360
Lettings/Keyholder	<a href="mailto:mary.preece1@btinternet.com">mary.preece1@btinternet.com</a>	
Great Finborough & Buxhall Under 5s	Delia Prior	07513 140072
	<a href="mailto:delia@gfbunderfive.co.uk">delia@gfbunderfive.co.uk</a>	
Great Finborough & Buxhall Brownies		<a href="mailto:halo.durrant@gmail.com">halo.durrant@gmail.com</a>
Allotments Association	Mary Smyth	672533
Candlestick Club	Keith Proctor	736598
Great Finborough & District Garden Club	Judith Cameron	672978
	<a href="mailto:judyandian@btinternet.com">judyandian@btinternet.com</a>	
Chestnut Horse Pub	Sharon Shipp	674688
Great Finborough Community Cinema	Norman Vendittelli	07930 338580
Buxhall Women's Institute	Hilary Hall	<a href="mailto:hilary-hall@hotmail.co.uk">hilary-hall@hotmail.co.uk</a>
Head teacher, Great Finborough	Stephen Dodd	613208
Primary School	<a href="mailto:headteacher@greatfinborough.suffolk.sch.uk">headteacher@greatfinborough.suffolk.sch.uk</a>	
Police (Stowmarket SNT)	<a href="mailto:Stowmarket.snt@suffolk.pnn.police.uk">Stowmarket.snt@suffolk.pnn.police.uk</a>	101
Stowmarket High School		613541
Stowmarket Health Centre		776000
Combs Ford Surgery		678333
Stowmarket Library		613143
<b>Village website:</b> <a href="http://www.greatfinborough.onesuffolk.net">www.greatfinborough.onesuffolk.net</a>		
<b>Church website</b> <a href="http://www.standrewsgtfinborough.co.uk/">http://www.standrewsgtfinborough.co.uk/</a>		
<b>Primary School website:</b> <a href="http://www.greatfinborough.suffolk.sch.uk">www.greatfinborough.suffolk.sch.uk</a>		